



TestLine®

BIOVENDOR.GROUP

ELISA

Overview

ENG

**“We know our products and instruments we work with.
We use our real-life experiences to steadily improve our solutions.
We are happy to implement them.”**

Table of contents

Why ELISA?	4
Why do we automate?	4
Customer service	5
Technical and service support	6
Distributor training	6
Pre-installation phase	6
On-site Installation	6
Application settings	6
On-site end-user training	6
General customer support	6
Automatic analyzers	7
DYNEX DS2	8
DYNEX DSX	10
DYNEX Agility® system	12
Gemini	13
EIA kits	14
TestLine conventional EIA kits	14
TestLine SmartKits®	15
Ordering information	16
Consumables	16
Kits	17

Why ELISA?

- **ELISA** is a **gold-standard technique** used for **serology**. Using the simple principle of antibody-antigen bond, it gives us the possibility to measure the concentration of virtually any antigen with available antibodies.
- This technology offers high throughput and great reliability along with very simple design and ease of use for everyday testing in laboratories of any size and capacity.
- **Key benefits:**
 - more sensitive
 - short processing time
 - does not require highly experienced laboratory staff
 - simple evaluation, not influenced by human error
- **Further benefits:**
 - efficient costs for large scale testing
 - affordable instruments with high throughput
 - flexibility in processing both manual and automation
 - proven quality over years with easy troubleshooting

Why do we automate?

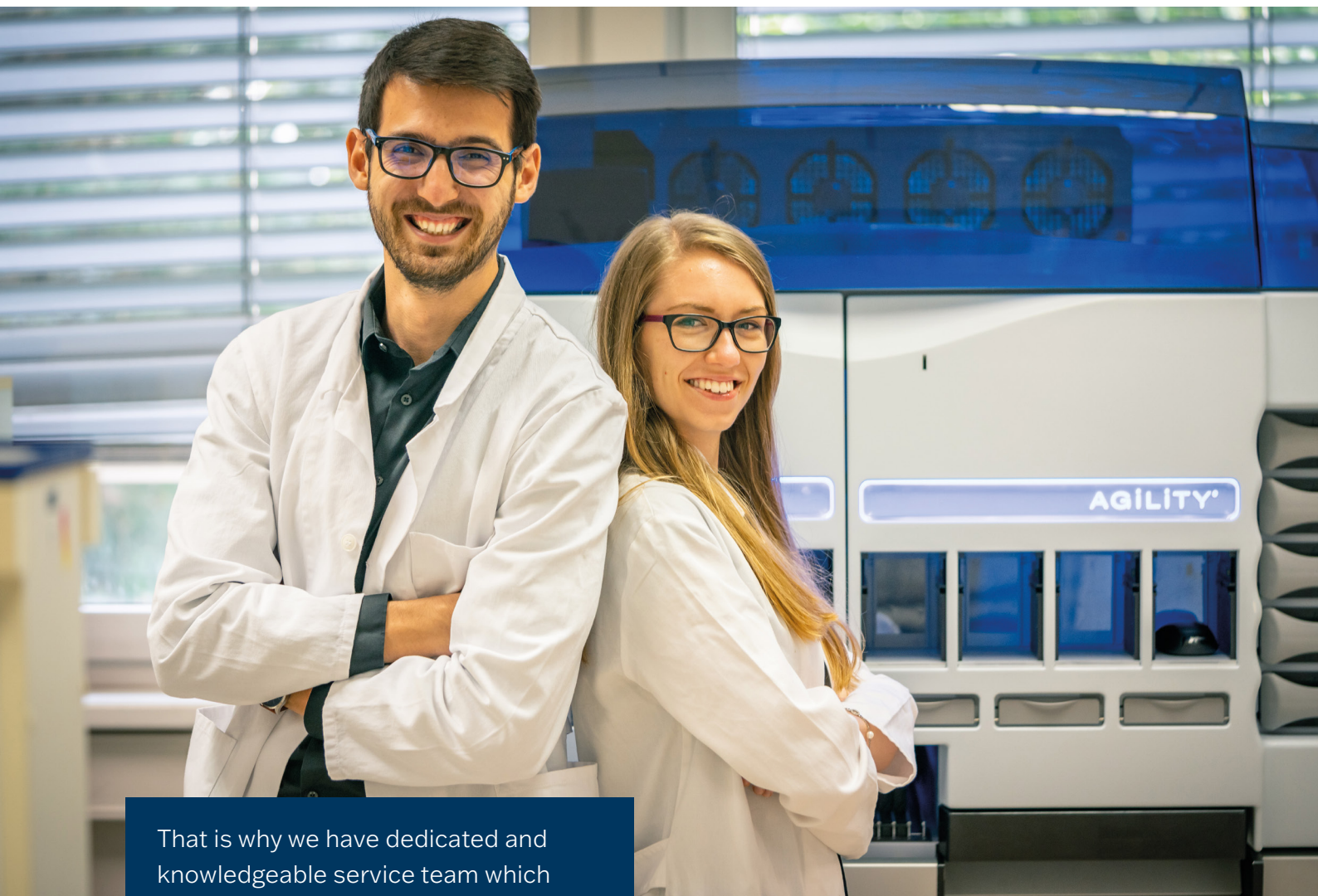


- Cost efficiency (cost of manpower)
- Substitution for missing laboratory staff
- Elimination of human error
- Precise results with high repeatability
- Time saving (automatic evaluation of results)
- Easy to adapt to new tests

Customer service

We know, how important is:

- ... to find somebody on the other side of the phone when needed,
- ... to react quickly and flexible to support your customers and patients,
- ... to provide up-to-date product and service information,
- ... to build the long-term relationship and mutual trust.



That is why we have dedicated and knowledgeable service team which supports our direct customers and distributors on daily basis, and we also run several product trainings on site or virtually throughout the year to increase your product knowledge and ability to act.

Technical and service support

Distributor training

Our distributors are trained for the general service activities and troubleshooting as well as for the application part. It takes place usually at TestLine premises and depending on the instrument it takes 0,5 day – 4 days. We provide these trainings free of charge for our partners. You will get method's theoretical background, instrument's basics, and on-site practical training.

Pre-installation phase

We always try to tailor the solution to customer's needs. We follow your workflow and try to optimize it. We organize the parameters in each run and simulate the optimized process in the instrument's software. That means we can draw the optimized workflow and determine the consumable consumption.

On-site Installation

TestLine aims to be always at the first instrument installation with the distributor supervising and helping them out. The on-site Installation consists of the lab working space preparation, and instrument unloading and calibration phase.

Application settings

Uploading the assays protocols, configuration of the software (reports, etc.)

Application settings can be partially done already in TestLine before the instrument is taken to the lab. This depends on the information volume handed over by the customer / distributor.

On-site end-user training

We go deep because we care. We cover all these aspects and areas:

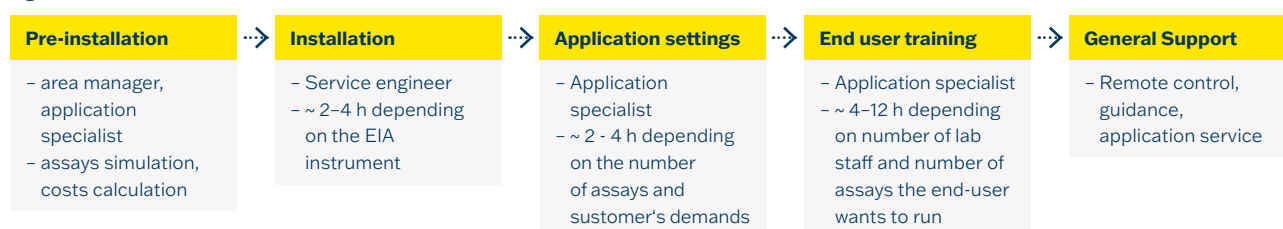
- Assay principle, basic components of the instrument, instrument initialization
- Loading consumables, unloading solid/liquid waste, loading samples / calibrators / controls
- Software review + Remote Access
- Maintenance
- LIS connection on side of our instruments (LIS provider needs to be involved)

General customer support

Our support does not end once the instrument has been installed in the lab. We rely on our well-chosen distribution partners and stay alongside working as team.

- Remote control – depending on lab's connection policy, we can connect remotely to the instrument and check the status, data, and any error messages
- Guidance – we guide and navigate you through any potential challenges

Figure 1 Processes at the end user site



Automatic analyzers

TestLine has created a stable and strong collaborations with **well-known manufacturers of ELISA instruments** and supportive tools. We have optimized our laboratory kits for the smooth and user-friendly processing on these particular machines in order to create a synergy effect and great conditions for your laboratory staff.

That is why we can truly recommend instruments of **DYNEX® Technologies** from the United States, as we spent a great deal of time on its hardware, software and protocols optimization, gaining in dept experience and knowledge necessary for joint finetuning of the kits and instruments bundle. Thanks to this fit, TestLine ranks among the very TOP suppliers of DYNEX instruments globally, with great on-spot and remote support.

The other fruitful collaboration is with the well-known company **STRATEC SE**, which offers together with TestLine kits flexible solution regarding the number of processed parameters in one plate. Both of these options are slightly different and we are ready to advise our customer which of these shall better suit his needs.

When it comes to the first get-together between a customer and the instrument, we offer different trial scenarios depending on the customers location and vision.

Let's dive into it deeper.



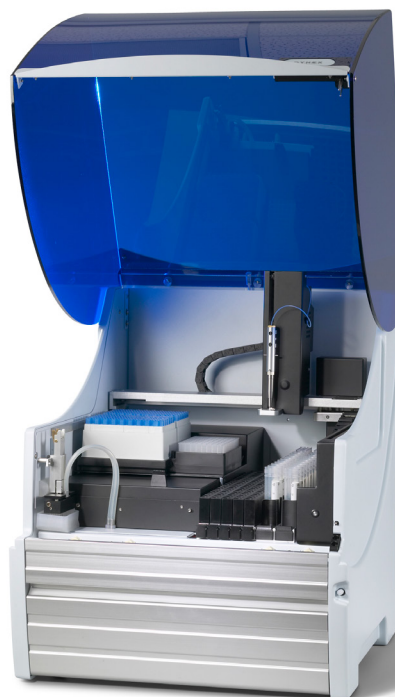
DYNEX DS2

Compact, practical, and time-saving solution for ELISA automation.

Manufacturer: DYNEX® Technologies, USA

Specification & key benefits

- 2 microplate analyzer
- Open system
- Sample capacity: 100 serum tubes
- Up to 6 different parameters simultaneously
- OD range: 0–3.0
- 2 independent incubation units
- LIS connectivity
- Liquid-level monitoring
- Barcode scanning
- Possibility of two stage dilution
- **TestLine Rack – unique insert for TL reagent bottles**
- **IVDR (2017/746) or IVDD (98/79/EC) compliant**
- Dimensions: 68 (d) x 66 (h) x 54 (w) cm
- Weight: 48 kg



The DYNEX DS2 system is one of a kind laboratory tool offering several key attributes:

Back in time it offered truly **breakthrough** technology as it was among the first fully automated open system ELISA instruments, eliminating plate drift by matching wash step with pipette dispense speed. This heritage never disappeared and became a proven strength.

It is **dynamic** providing a simultaneous scan of the sample barcode on the tubes upon loading and full automation regarding sample dilution and distribution/pipetting, incubation, washing and reagent dispensing.

It has a **precise** pipetting of the assay reagents in locations within the 96 well microplates.

Increasing **cost-effectivity** – With lesser number of moving parts, you see less breakdowns and more savings in service costs and equipment repair downtime. Furthermore, it eliminates laborious manual testing and reduces technician variability.

Last but not least the **unbeatable quality control**. It offers a user-friendly control system, chain of custody management (user action audit trail) and on-board instrument diagnostics (instrument self-test)

This instrument is ideal for running low demand assays in large and medium sized laboratories, or for routine processing in small laboratories and offers the possibility to run up to 6 unique TestLine assays in one run.

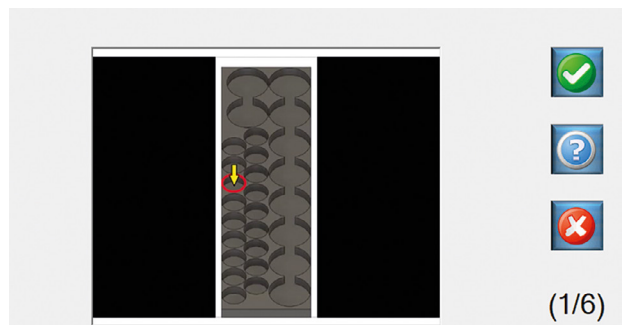
When ordered at TestLine, it comes with a special customized rack, so there is no need to pour the reagents to the universal vials. **Just take out the original bottles from the kit and simply place them inside.** The software guides you through the whole kits processing, it is intuitive and easy to follow.



TestLine reagent rack DS2

Even if you have just around **30 samples per week**, it is already enough to think about this compact and reliable assistant.

Moreover, it has the **Electronic Signature Pipetting (ESP)** – a sophisticated technique for detection of gross pipetting errors often caused by the presence of particulate matter, clots, foam, or bubbles in the sample. Insufficient sample transfer can therefore be detected and reported to the operator during a run and thus ESP supports the reliable workload scheduling.



DYNEX DSX

Medium sized, effective, and reliable solution for ELISA automation.

Manufacturer: DYNEX® Technologies, USA

Specification & key benefits

- 4 microplate analyzer
- Open system
- Sample capacity: 96 serum tubes
- OD range: 0–3.0
- 4 independent incubation units
- LIS connectivity
- Liquid-level monitoring
- Barcode scanning
- Possibility of two stage dilution
- **TestLine Rack – unique insert for TL reagent bottles**
- **IVDR (2017/746) or IVDD (98/79/EC) compliant**
- Dimensions: 91 (d) x 80 (h) x 106 (w) cm
- Weight: 136 kg



The DYNEX DSX is the next stage of fully automated 4-plate ELISA processing system with these key attributes:

The **Breakthrough** data reduction wizard simplifies the programming of even the most complex assay configurations and calculations.

Seamless automation and intuitive interface – the Worklist Load Wizard makes the process of setting up the DSX worklist easy, graphically showing where to place reagents, samples and plates at the beginning of each run. The optional LIMS Interface enables the DSX to communicate with the laboratory host computer (LIMS) to download pending test orders and to upload completed assay results.

DSX is a tried-and-tested automated open system capable of performing 6 assays per plate simultaneously, providing optimized efficiency and speed. The instrument uses a perfectly synchronized system to eliminate plate drift (by matching wash step with pipette dispense speed) and thus ensure **premium consistency** across four different plate incubators, providing great repeatability of results.

This instrument is ideal for running low demand assays in large and medium sized laboratories, although according to our experiences there are labs using DSX with about **40 samples per week** already.

It offers the possibility to run up to **12 unique TestLine assays** across 4 plates in one run. Similarly to DS2, when ordered at TestLine, it comes with a special rack so there is **no need to pour the reagents to the universal vials** and you just take out the original bottles from the kit and simply place them inside. The software guides you through the whole kits processing, it is intuitive and easy to follow.



TestLine reagent rack DSX

Instruments Maintenance Requirements:

<u>Frequency</u>	<u>Time consumption</u>				<u>Operator</u>
	<u>DS2</u>	<u>DSX</u>	<u>AGILITY</u>	<u>GEMINI</u>	
Daily	5 min	15 min	5 min	5 min	End user
Weekly	10 min	10 min	10 min	30 min	End user
Monthly	30 min	30 min	30 min	30 min	End user
6 monthly	–	–	–	1–2 hrs	Distributor/TestLine
Yearly	1–2 hrs	1–2 hrs	1–3 hrs	1–2 hrs	Distributor/TestLine

*Please check the availability for your country

DYNEX Agility® system

High throughput, cutting-edge instrument for full automation of ELISA processing.

Manufacturer: DYNEX® Technologies, USA

Specification & key benefits

- 12 microplate analyzer
- Open system
- Sample capacity: 200 serum tubes
- OD range: 0–3.5
- 12 independent incubation units
- **Up to 16 SmartKit carriers stored on-board for simultaneous runs**
- LIS connectivity
- Liquid-level monitoring
- Automatic barcode scanning
- Automatic strip check
- Possibility of two stage dilution
- Continuous sample loading
- Integrated PC
- Supplied with a barcode printer
- **IVDR (2017/746) or IVDD (98/79/EC) compliant**
- Dimensions: 90 (d) x 123 (h) x 125 (w) cm
- Weight: 213 kg



Agility's intelligent design represents the next **breakthrough in ELISA automation**. With this streamlined system, labs and medical facilities can turn to Agility® for maximum efficiency and reliability. Reduce your cost per test while enabling your time-strapped team to put their efforts elsewhere. Agility® is redefining ELISA with **ingenious design, total automation and a revolutionary approach to reagent loading** that boosts productivity and minimizes hands-on time like never before - true walk-away freedom.

Agility® offers great potential, combining cutting-edge automation technology and user comfort with the use of **TestLine SmartKits®**. All you need to do is just take away the lids from the bottles and place the kits into the machine. Agility® calculates everything itself and offers you the best scenarios. No need to define anything, no need to organize anything.

With its large potential, Agility® is a perfect solution for laboratories that are searching for the implementation of large-scale automation. Our experiences with **placement of more than 60 Agility® systems** (as of 2021) showed the best efficiency has been reached by running maximum 13 different assays across 12 different plates.

Although the Agility® system is mainly foreseen for bigger sites, it has been also placed in the labs that test less samples but for many parameters. So even when you test about **60 samples per week** Agility® can be a right choice for **multiparametric testing!**

Gemini

An ideal solution for ELISA processing.

Manufacturer: STRATEC SE, Germany

Specification & key benefits

- 2-3 microplate analyzer
- Open system
- **Combined capacity for samples, reagents and controls, e.g: 144 samples + 8 reagents + 16 controls**
- OD range: 0-3
- 2 independent incubation units
- LIS connectivity
- Liquid-level monitoring
- Possibility of two stage dilution
- Integrated PC
- **IVDR (2017/746) or IVDD (98/79/EC) compliant**
- Dimensions: 65 (d) x 75 (h) x 125 (w) cm
- Weight: 115 kg



Gemini, especially its software provides a **great flexibility** when it comes to number of tests/assays you can perform in one plate. The second great feature is the possibility of playing with number of reagent and sample racks. Here you can opt different number of racks which suit your lab workflow the best.

Gemini is also available as COMBO version, combining well-proven EIA technology with highly sophisticated IFA applications and thus thanks to an innovative time-management allows processing of up to **16 IFA slides or 3 microplates simultaneously**.

It provides trusted ELISA performance based on the well-established Gemini processor. It has an open software with complete results delivery and LIS interface. Designed with sample and reagent ID-barcode reading.

Gemini offers one significant advantage. Every **run can be started from any position on the plate**, contrary to many other instruments, where new assay must start from next strip. This offers the possibility to use breakable wells to its full potential. That is why we recommend this instrument especially when you intend to use our Microblot-Array solution in the lab.

You can consider having this instrument in the lab starting with around 30 samples per week. To give you an idea about possible setup you can test for example 144 samples within 2 assays or 96 samples within 8 assays. The flexibility is great – our team will help you!

EIA kits

TestLine conventional ELISA kits

Products' characteristics

- High diagnostic sensitivity and specificity – on average more than 95% per each
- Very good stability - average shelf life of products 15 months
- Possibility of avidity detection in relevant kits
- All human products CE, IVDD/IVDR compliant
- Participation in External Quality Assessment INSTAND (DE), NEQAS (UK) and Labquality (FI)

Products' advantages and user comfort

- Short total assay time – 90 min on average
- Kits ready for automation – both semi-automation and full automation possible
- Ready-to-use components – no extra work (no more dilution needed)
- Color-coded components – makes the kits processing intuitive
- Interchangeable components – non-critical components are interchangeable within the TestLine EIA portfolio
- Easy assay procedure – protocol is easy to follow and understand
- Uniform assay procedure – protocols are the same within a range of the TestLine EIA portfolio
- Breakable microplate strips and wells – possibility to adjust the number of tests for each assay, less waste



TestLine SmartKits®

An innovative way for fully automated ELISA processing.

The difference between standard ELISA kit and our smart kits is that SmartEIA kit comes along a special insert with printed barcode containing all relevant information for the corresponding assay, and a cap holder eliminating extra work and cross contamination.

- Designed for high throughput and automation
- Inserts compatible with **DYNEX Agility system**
- Preprinted bar-codes with related assay information (assay type, expiry, volume of tests left, etc.)
- Can also be used for manual processing or with other instruments
- Practical cap holder included

Three easy steps to start testing:

- 1. Remove the caps
- 2. Place the insert into an agility rack and the instrument itself
- 3. Run the assay

DYNEX Agility® system can process virtually any conventional ELISA kit that is meant to be processed on an open ELISA instrument. Kits are divided into different categories, depending on the compatibility:

- **Gold kit** – All components fit into the insert. There is no need to transfer liquids to different bottles or dilute reagents using concentrated ones. All TestLine SmartEIA kits are “Gold” kits, as they are always supplied in the Agility compatible insert, with pre-printed barcode containing the processing information for the instrument.
- **Silver kit** – Certain manufacturers might use bottles that will fit into the smart insert, but the insert needs to be bought separately and the bottles must be transferred to it. Additionally, the user needs to print the barcodes, and assay protocols must be developed by TestLine service department (additional fees may apply).
- **Bronze kit** – In case, when the reagents do not fit in to the insert, they must be transferred to suitable bottles, compatible with the insert. Both suitable bottles and inserts can be bought in sufficient quantities by TestLine. Once the reagents are fitted to the insert, the kit can be treated as Silver (description above).



*Specific inserts and bottles must be bought for Silver and Bronze kits.

Ordering information

Consumables

<u>Cat. No.</u>	<u>Consumables</u>	<u>Agility</u>	<u>DS2</u>	<u>DSX</u>	<u>Gemini</u>
62910	Well Dilution Strips (250 x 8-well/box)	✓	✓	✓	✓
65910	Racked Sample Tips (4 x 108=432)		✓	✓	
65920	Racked Reagent Tips (4 x 108=432)		✓	✓	
67910	Sample Tips, 8 racks of 112 (896/box)	✓			
67920	Reagent Tips, 5 racks of 98 (490/box)	✓			
89611	Gemini Sample Tips 300 µl				✓
89612	Gemini Reagent Tips 1100 µl				✓



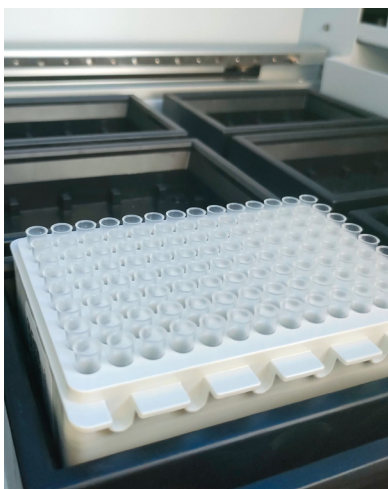
Gemini Sample and Reagent Tips



Dilution strips



Agility reagent tips



Agility sample tips



DSX/DS2 Sample (blue) /
Reagent (transparent) tips

Kits

IMMUNOLOGY

Cat. No	Product name	No. of tests	Method	Evaluation	Sample type
ScA096	EIA ASCA IgA	96	Sandwich ELISA	IP, U/ml	S/P
ScG096	EIA ASCA IgG	96	Sandwich ELISA	IP, U/ml	S/P
CCPA96	EIA CCP IgA	96	Sandwich ELISA	IP, U/ml	S/P
CCPG96	EIA CCP IgG	96	Sandwich ELISA	IP, U/ml	S/P
DNA096	EIA dsDNA	96	Sandwich ELISA	IP, IU/ml	S/P
ENAp12	EIA ENA profile plus	12	Sandwich ELISA	IP	S/P
ENA096	EIA ENA screen plus	96	Sandwich ELISA	IP	S/P
GDA096	EIA Gliadin DA IgA	96	Sandwich ELISA	IP, U/ml	S/P
GDG096	EIA Gliadin DA IgG	96	Sandwich ELISA	IP, U/ml	S/P
GIA096	EIA Gliadin IgA	96	Sandwich ELISA	IP, U/ml	S/P
GIG096	EIA Gliadin IgG	96	Sandwich ELISA	IP, U/ml	S/P
Jo1096	EIA Jo-1	96	Sandwich ELISA	IP, U/ml	S/P
MiA096	EIA Milk IgA	96	Sandwich ELISA	IP, U/ml	S/P
MiG096	EIA Milk IgG	96	Sandwich ELISA	IP, U/ml	S/P
MiM096	EIA Milk IgM	96	Sandwich ELISA	IP, U/ml	S/P
RFA096	EIA RF IgA	96	Sandwich ELISA	IP, U/ml	S/P
RFG096	EIA RF IgG	96	Sandwich ELISA	IP, U/ml	S/P
RFM096	EIA RF IgM	96	Sandwich ELISA	IP, U/ml	S/P
Scl096	EIA Scl-70	96	Sandwich ELISA	IP, U/ml	S/P
Sm0096	EIA Sm	96	Sandwich ELISA	IP, U/ml	S/P
SSA096	EIA SS-A	96	Sandwich ELISA	IP, U/ml	S/P
SSB096	EIA SS-B	96	Sandwich ELISA	IP, U/ml	S/P
tTA096	EIA Transglutaminase IgA	96	Sandwich ELISA	IP, U/ml	S/P
tTG096	EIA Transglutaminase IgG	96	Sandwich ELISA	IP, U/ml	S/P
RNP096	EIA U1RNP	96	Sandwich ELISA	IP, U/ml	S/P

INFECTIOUS SEROLOGY

Cat. No	Product name	No. of tests	Method	Evaluation	Sample type
AdA096	EIA Adenovirus IgA	96	Sandwich ELISA	IP	S/P
AdG096	EIA Adenovirus IgG	96	Sandwich ELISA	IP	S/P
AdM096	EIA Adenovirus IgM	96	Sandwich ELISA	IP	S/P
● AfG096	Aspergillus fumigatus IgG ELISA	96	Sandwich ELISA	NTU	S/P
● AfM096	Aspergillus fumigatus IgM ELISA	96	Sandwich ELISA	NTU	S/P
BppA96	EIA Bordetella paraptussis IgA	96	Sandwich ELISA	IP	S/P
BppG96	EIA Bordetella paraptussis IgG	96	Sandwich ELISA	IP	S/P
BppM96	EIA Bordetella paraptussis IgM	96	Sandwich ELISA	IP	S/P
BpAT96	EIA Bordetella pertussis Toxin IgA	96	Sandwich ELISA	IU/ml	S/P
BpGT96	EIA Bordetella pertussis Toxin IgG	96	Sandwich ELISA	IU/ml	S/P
BpMT96	EIA Bordetella pertussis Toxin IgM	96	Sandwich ELISA	IP	S/P
BaM192	EIA Borrelia afzelii IgM (192)	192	Sandwich ELISA	IP	S/P/CSF/SF

Cat. No	Product name	No. of tests	Method	Evaluation	Sample type
BaGVD2	EIA Borrelia afzelii VlsE IgG (192)	192	Sandwich ELISA	IP	S/P/CSF/SF
BgM192	EIA Borrelia garinii IgM (192)	192	Sandwich ELISA	IP	S/P/CSF/SF
BgGVD2	EIA Borrelia garinii VlsE IgG (192)	192	Sandwich ELISA	IP	S/P/CSF/SF
BM0096	EIA Borrelia IgM	96	Sandwich ELISA	IP	S/P/CSF/SF
BrG192	EIA Borrelia recombinant IgG (192)	192	Sandwich ELISA	IP, U/ml	S/P/CSF/SF
BrM192	EIA Borrelia recombinant IgM (192)	192	Sandwich ELISA	IP, U/ml	S/P/CSF/SF
BGV096	EIA Borrelia VlsE IgG	96	Sandwich ELISA	IP	S/P/CSF/SF
● BruG96	Brucella IgG ELISA	96	Sandwich ELISA	NTU	S/P
● BruM96	Brucella IgM ELISA	96	Sandwich ELISA	NTU	S/P
● CaA096	Candida albicans IgA ELISA	96	Sandwich ELISA	NTU	S/P
● CaG096	Candida albicans IgG ELISA	96	Sandwich ELISA	NTU	S/P
● CaM096	Candida albicans IgM ELISA	96	Sandwich ELISA	NTU	S/P
CMA096	EIA CMV IgA	96	Sandwich ELISA	IP	S/P/CSF
CMG096	EIA CMV IgG	96	Sandwich ELISA	IP, U/ml, avidity	S/P/CSF
CMM096	EIA CMV IgM (RF/IgG sorb.)	96	Sandwich ELISA	IP	S/P/CSF
CoNA96	EIA COVID-19 NP IgA	96	Sandwich ELISA	IP, U/ml	S/P
CoNG96	EIA COVID-19 NP IgG	96	Sandwich ELISA	IP, U/ml	S/P
CoNM96	EIA COVID-19 NP IgM	96	Sandwich ELISA	IP, U/ml	S/P
CoRA96	EIA COVID-19 RBD IgA	96	Sandwich ELISA	IP, U/ml	S/P
CoRG96	EIA COVID-19 RBD IgG	96	Sandwich ELISA	IP, U/ml	S/P
CoRM96	EIA COVID-19 RBD IgM	96	Sandwich ELISA	IP, U/ml	S/P
EAG096	EIA EBV EA-D IgG	96	Sandwich ELISA	IP	S/P
EAM096	EIA EBV EA-D IgM (RF/IgG sorb.)	96	Sandwich ELISA	IP	S/P
EBG096	EIA EBV EBNA-1 IgG	96	Sandwich ELISA	IP, U/ml	S/P
EBM096	EIA EBV EBNA-1 IgM (RF/IgG sorb.)	96	Sandwich ELISA	IP	S/P
VCA096	EIA EBV VCA IgA	96	Sandwich ELISA	IP	S/P/CSF
VCG096	EIA EBV VCA IgG	96	Sandwich ELISA	IP, U/ml, avidity	S/P/CSF
VCM096	EIA EBV VCA IgM (RF/IgG sorb.)	96	Sandwich ELISA	IP, U/ml	S/P/CSF
● EchG96	Echinococcus IgG ELISA	96	Sandwich ELISA	NTU	S/P
● EC116A00CD	Enterovirus IgA ELISA	96	Sandwich ELISA	NTU	S/P
● EC116G00CD	Enterovirus IgG ELISA	96	Sandwich ELISA	NTU	S/P
● EC116M00CD	Enterovirus IgM ELISA	96	Sandwich ELISA	NTU	S/P
HMA096	EIA Helicobacter MONO IgA	96	Sandwich ELISA	IP, U/ml	S/P
HMG096	EIA Helicobacter MONO IgG	96	Sandwich ELISA	IP, U/ml	S/P
HMM096	EIA Helicobacter MONO IgM	96	Sandwich ELISA	IP, U/ml	S/P
HS1G96	EIA HSV 1 IgG	96	Sandwich ELISA	IP	S/P
HS1M96	EIA HSV 1 IgM	96	Sandwich ELISA	IP	S/P
HSVG96	EIA HSV 1+2 IgG	96	Sandwich ELISA	IP, U/ml, avidity	S/P/CSF
HSVM96	EIA HSV 1+2 IgM (RF/IgG sorb.)	96	Sandwich ELISA	IP	S/P/CSF
HS2G96	EIA HSV 2 IgG	96	Sandwich ELISA	IP	S/P
HS2M96	EIA HSV 2 IgM	96	Sandwich ELISA	IP	S/P
ChA096	EIA Chlamydia IgA	96	Sandwich ELISA	IP	S/P
ChG096	EIA Chlamydia IgG	96	Sandwich ELISA	IP	S/P
ChM096	EIA Chlamydia IgM	96	Sandwich ELISA	IP	S/P
ChpA96	EIA Chlamydia pneumoniae IgA	96	Sandwich ELISA	IP, U/ml	S/P
ChpG96	EIA Chlamydia pneumoniae IgG	96	Sandwich ELISA	IP, U/ml	S/P
ChpM96	EIA Chlamydia pneumoniae IgM	96	Sandwich ELISA	IP	S/P
CpAR96	EIA Chlamydia pneumoniae REC IgA	96	Sandwich ELISA	IP, U/ml	S/P

Cat. No	Product name	No. of tests	Method	Evaluation	Sample type
CpGR96	EIA Chlamydia pneumoniae REC IgG	96	Sandwich ELISA	IP, U/ml	S/P
ChtA96	EIA Chlamydia trachomatis IgA	96	Sandwich ELISA	IP, U/ml	S/P
ChtG96	EIA Chlamydia trachomatis IgG	96	Sandwich ELISA	IP, U/ml	S/P
ChtM96	EIA Chlamydia trachomatis IgM	96	Sandwich ELISA	IP	S/P
InAA96	EIA Influenza A IgA	96	Sandwich ELISA	IP	S/P
InAG96	EIA Influenza A IgG	96	Sandwich ELISA	IP	S/P
InAM96	EIA Influenza A IgM	96	Sandwich ELISA	IP	S/P
InBA96	EIA Influenza B IgA	96	Sandwich ELISA	IP	S/P
InBG96	EIA Influenza B IgG	96	Sandwich ELISA	IP	S/P
InBM96	EIA Influenza B IgM	96	Sandwich ELISA	IP	S/P
● LpG096	Legionella pneumophila IgG ELISA	96	Sandwich ELISA	NTU	S/P
● LpM096	Legionella pneumophila IgM ELISA	96	Sandwich ELISA	NTU	S/P
● LiG096	Leishmania infantum IgG ELISA	96	Sandwich ELISA	NTU	S/P
MeG096	EIA Measles IgG	96	Sandwich ELISA	IP, IU/l, avidity	S/P
MeM096	EIA Measles IgM (RF/IgG sorb.)	96	Sandwich ELISA	IP	S/P
MuA096	EIA Mumps IgA	96	Sandwich ELISA	IP	S/P
MuG096	EIA Mumps IgG	96	Sandwich ELISA	IP, U/ml	S/P
MuM096	EIA Mumps IgM (RF/IgG sorb.)	96	Sandwich ELISA	IP	S/P
MyA096	EIA Mycoplasma IgA	96	Sandwich ELISA	IP, U/ml	S/P
MyG096	EIA Mycoplasma IgG	96	Sandwich ELISA	IP, U/ml	S/P
MyM096	EIA Mycoplasma IgM	96	Sandwich ELISA	IP, U/ml	S/P
MyAR96	EIA Mycoplasma REC IgA	96	Sandwich ELISA	IP, U/ml	S/P
MyGR96	EIA Mycoplasma REC IgG	96	Sandwich ELISA	IP, U/ml	S/P
MyMR96	EIA Mycoplasma REC IgM (RF/IgG sorb.)	96	Sandwich ELISA	IP, U/ml	S/P
PaiA96	EIA Parainfluenza mix IgA	96	Sandwich ELISA	IP	S/P
PaiG96	EIA Parainfluenza mix IgG	96	Sandwich ELISA	IP	S/P
PaiM96	EIA Parainfluenza mix IgM	96	Sandwich ELISA	IP	S/P
PVG096	EIA Parvovirus B19 IgG	96	Sandwich ELISA	IP, IU/ml	S/P
PVM096	EIA Parvovirus B19 IgM (RF/IgG sorb.)	96	Sandwich ELISA	IP	S/P
PCG096	EIA PCP IgG	96	Sandwich ELISA	IP, U/ml	S/P
RSA096	EIA RSV IgA	96	Sandwich ELISA	IP	S/P
RSG096	EIA RSV IgG	96	Sandwich ELISA	IP	S/P
RSM096	EIA RSV IgM	96	Sandwich ELISA	IP	S/P
RubG96	EIA Rubella IgG	96	Sandwich ELISA	IP, U/ml, avidity	S/P
RubM96	EIA Rubella IgM (RF/IgG sorb.)	96	Sandwich ELISA	IP	S/P
● SmG096	Schistosoma mansoni IgG ELISA	96	Sandwich ELISA	NTU	S/P
● SmM096	Schistosoma mansoni IgM ELISA	96	Sandwich ELISA	NTU	S/P
TBG096	EIA TBE Virus IgG	96	Sandwich ELISA	AU/ml, avidity	S/P/CSF
TBM096	EIA TBE Virus IgM (RF/IgG sorb.)	96	Sandwich ELISA	IP	S/P/CSF
TeTG96	EIA Tetanus Toxoid IgG	96	Sandwich ELISA	IU/ml	S/P
TcA096	EIA Toxocara IgA	96	Sandwich ELISA	IP	S/P
TcG096	EIA Toxocara IgG	96	Sandwich ELISA	IP, avidity	S/P
TgA096	EIA Toxoplasma IgA	96	Capture ELISA	IP	S/P
TgE096	EIA Toxoplasma IgE	96	Capture ELISA	IP	S/P
TgG096	EIA Toxoplasma IgG	96	Sandwich ELISA	IP, IU/ml, avidity	S/P
TgM096	EIA Toxoplasma IgM	96	Capture ELISA	IP	S/P
TpG096	EIA Treponema pallidum IgG	96	Sandwich ELISA	IP	S/P
TpM096	EIA Treponema pallidum IgM	96	Sandwich ELISA	IP	S/P

Cat. No	Product name	No. of tests	Method	Evaluation	Sample type
Tp0096	EIA Treponema pallidum TOTAL	96	Sandwich ELISA	IP	S/P
VZVA96	EIA VZV IgA	96	Sandwich ELISA	IP	S/P/CSF
VZVG96	EIA VZV IgG	96	Sandwich ELISA	IP, IU/ml, avidity	S/P/CSF
VZVM96	EIA VZV IgM (RF/IgG sorb.)	96	Sandwich ELISA	IP	S/P/CSF
YeA096	EIA Yersinia IgA	96	Sandwich ELISA	IP, U/ml	S/P
YeG096	EIA Yersinia IgG	96	Sandwich ELISA	IP, U/ml	S/P
YeM096	EIA Yersinia IgM	96	Sandwich ELISA	IP, U/ml	S/P

VETERINARY

Cat. No	Product name	No. of tests	Method	Evaluation	Sample type
AD0480	AD Ab ELISA (Aujeszky's disease)	480	Sandwich ELISA	qualitative	BS/ME
BHd480	BHV-1 Ab ELISA (Infectious bovine rhinotracheitis – IBR)	480	Sandwich ELISA	qualitative	S/M
BVD480	BVD-MD IgG ELISA (Bovine Viral Diarrhoea-Mucosal Disease)	480	Sandwich ELISA	qualitative	S/M
DBGM96	Dog EIA Borrelia IgG/IgM	48/48	Sandwich ELISA	IP	S
EBL480	EBLV Ab ELISA (Enzootic bovine leukosis)	480	Sandwich ELISA	qualitative	BS
IBR192	IBR-gB ELISA (Infectious bovine rhinotracheitis – IBR – detection of gB antibodies-blocking ELISA)	192	Competitive ELISA	qualitative	S/P/M
IPN096	IPNV Ag ELISA (Infectious pancreatic necrosis of salmonids)	96	Sandwich ELISA	qualitative	OH/ICCM
SVC096	SVCV Ag ELISA (Spring viraemia of carp)	96	Sandwich ELISA	qualitative	OH/ICCM
VHS096	VHSV Ag ELISA (Viral haemorrhagic septicaemia of salmonids)	96	Sandwich ELISA	qualitative	S/P

All human EIA kits TestLine are available as SmartEIA for automatic processing in the Agility® system.

- In cooperation with NovaTec Immunodiagnostica GmbH.

S = serum | **P** = plasma | **CSF** = cerebrospinal fluid | **SF** = synovial fluid | **BS** = blood serum | **ME** = meat | **M** = milk
OH = organ homogenates | **ICCM** = infected cell culture media



TestLine Clinical Diagnostics s.r.o.

Křižíkova 188/68, 612 00 Brno, Czech Republic
+420 549 121 259 | +420 541 243 390
sales@testlinecd.com
www.testlinecd.com



Company is certified to the quality management system standards ISO 9001 and ISO 13485 for in vitro diagnostics.